

Anti- α hlgG2 Antibody(Abituzumab)

Product information

GM-49298AB-10	10 μ g
GM-49298AB-100	100 μ g
GM-49298AB-1000	1 mg

Antibody Information

Species Reactivity	Human;
Clone	Abituzumab
Source/Isotype	Monoclonal human IgG2, κ
Application	Flow cytometry
Specificity	Detects ITGAV
Gene	ITGAV
Other Names	CD51, MSK8, VNRA, VTNR, ITGAV
Gene ID	3685(human)
Background	<p>ITGAV encodes integrin alpha chain V. Integrins are heterodimeric integral membrane proteins composed of an alpha chain and a beta chain. Alpha V undergoes post-translational cleavage to yield disulfide-linked heavy and light chains, that combine with multiple integrin beta chains to form different integrins. Among the known associating beta chains (beta chains 1,3,5,6, and 8; 'ITGB1', 'ITGB3', 'ITGB5', 'ITGB6', and 'ITGB8'), each can interact with extracellular matrix ligands; the alpha V beta 3 integrin, perhaps the most studied of these, is referred to as the Vitronectin receptor (VNR). In addition to adhesion, many integrins are known to facilitate signal transduction. Overexpression of the ITGAV gene is associated with progression and spread of colorectal cancer, and prostate cancer.</p>
Storage	Store at 2-8°C short term (1-2 weeks).Store at \leq -20°C long term. Avoid repeated freeze-thaw.
Formulation	Phosphate-buffered solution, pH 7.2.
Endotoxin	< 1 EU/mg, determined by LAL gel clotting assay

Version:3.2 Revision Date:03/25/2023

Data Examples

Flow cytometry

H_αvβ6 HEK-293 Cell Line (Catalog # GM-C19431) was stained with Anti-αv hlgG2 Antibody (Catalog # GM-49298AB) or isotype control antibody, followed by anti-Human IgG APC-conjugated Secondary Antibody.

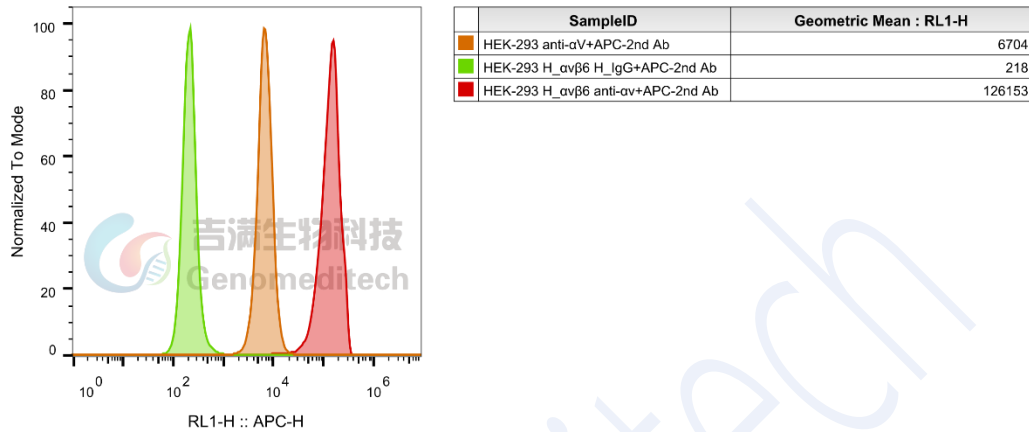


Fig. Facs

Flow cytometry

H_αvβ6 MC38 Cell Line (Catalog # GM-C31429) was stained with Anti-αv hlgG2 Antibody (Catalog # GM-49298AB) or isotype control antibody, followed by anti-Human IgG APC-conjugated Secondary Antibody.

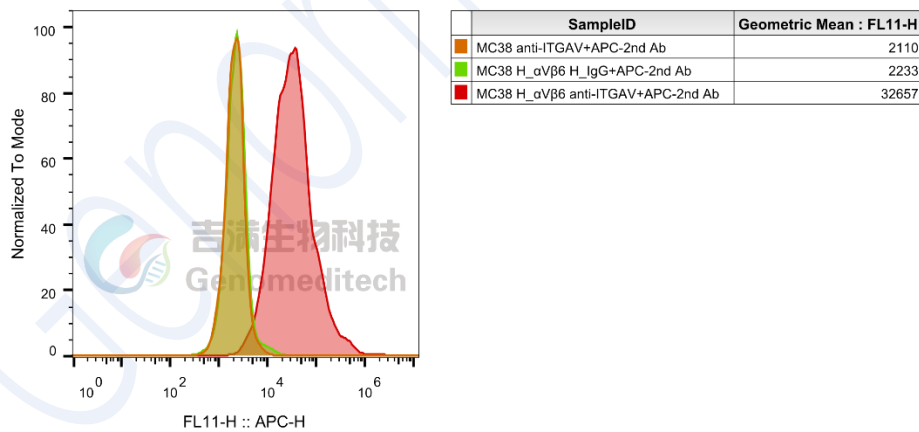


Fig. Facs